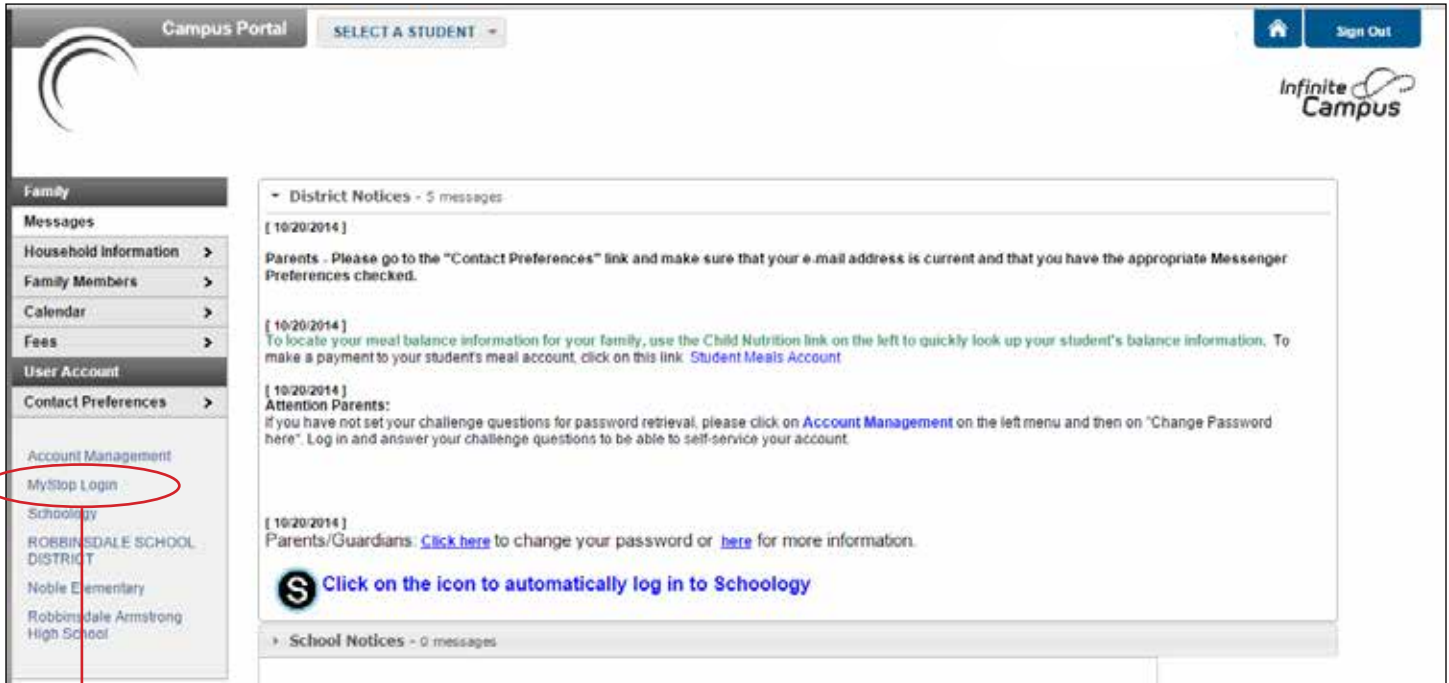


The passwords for MyStop are online, in the Parent Portal. If you do not have the ability to log into the Parent Portal, go to “http://www.http://rdale.org/parents/Parent_Portals” to get that set up. When you log into the Parent Portal, this is what you should look for:



Once you click here, you'll see:

MyStop Login Information

MyStop is an innovative application that lets parents see the real-time location of their student's bus. When a parent logs in, they will see a map. At the bottom of that map, they will see an estimated time that the bus will arrive at the stop. Here are some important points to remember:

- If you do not see an estimated arrival time at the bottom of the map, it is either because
 - the child has already been dropped off or picked up (*bus passed your stop*), or
 - the bus is not on an active route (*no active route found*).
- Your username for MyStop is the same userName you use for other Robbinsdale parent accounts; however, the password for MyStop DOES NOT CHANGE, and cannot be changed by parent users.
- **Questions?** Send an email to: transportation@rdale.org.

Your MyStop username and password can be seen below.

QUICK LINK :

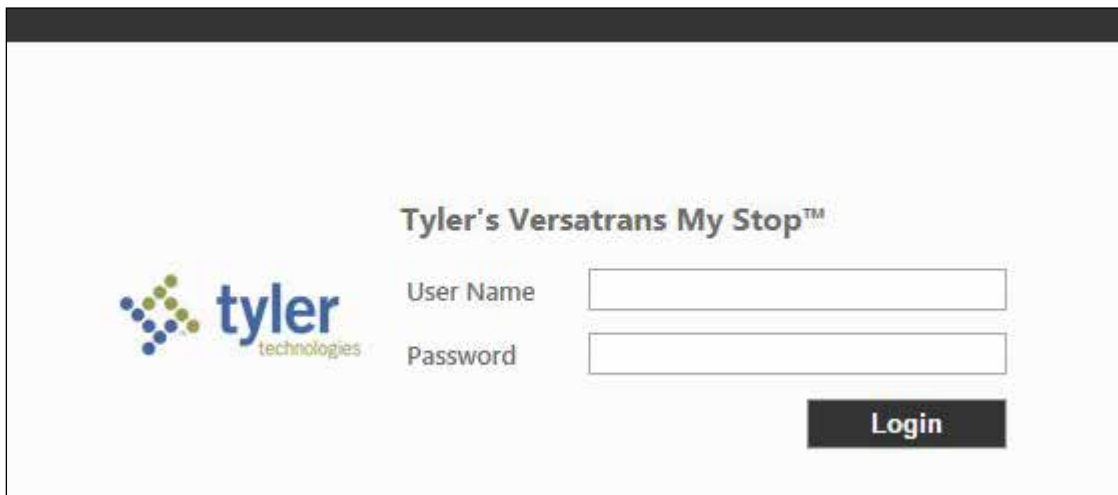
Click on My Stop=>: [My Stop](#)

CREDENTIALS :

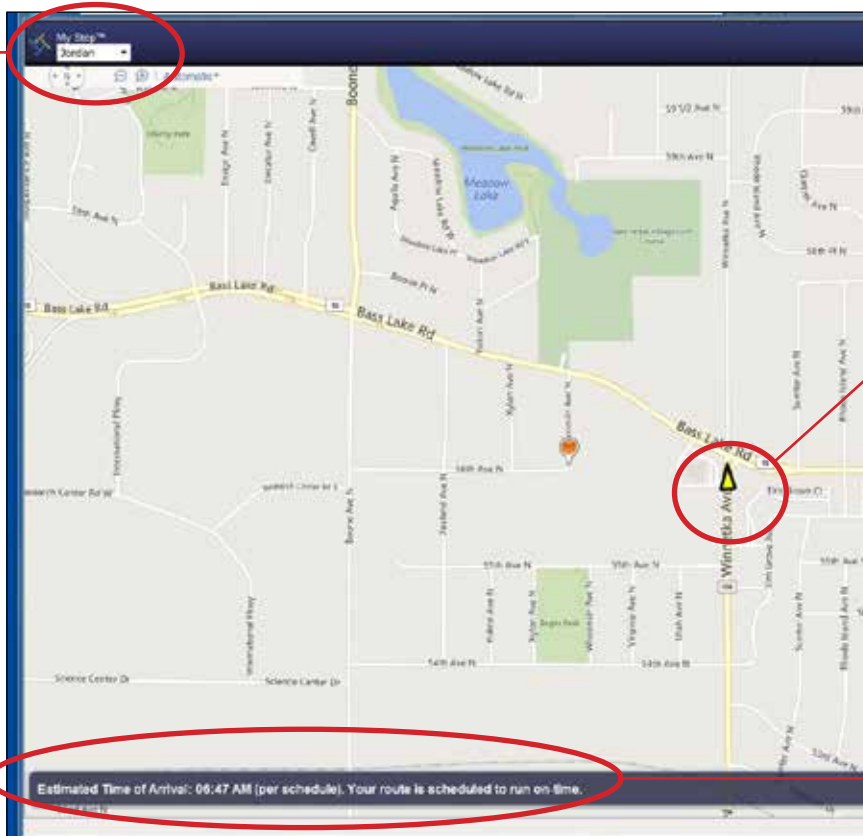


This is just an example. Your account will have a login and password.

Now that you have your password and login, go to <https://vtrans.rdale.org/onscreen/MyStop/Login-Mobile.aspx>. The same address can be used on smartphones, desktops and tablets. This is what you should see:



Enter your name and password. This is what you can expect to see. The map can be zoomed in and out, and your bus stop will be indicated by a small orange icon. The bottom left of the map will include an estimate of the bus' arrival.



The bus. This icon will move every 30 seconds as new GPS data is received.

Time estimate for bus

If you have more than one student, you can review several different routes by selecting each student's name from this drop-down menu.

NOTE: If "Estimated time of arrival is unavailable (bus passed stop)," that means the bus has already passed your stop.